

YOUR DAY OUT IN GLOUCESTER

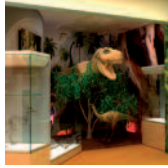
CITY MUSEUM 30

Brunswick Road, Gloucester GL1 1HP
01452 396131

www.gloucester.gov.uk/citymuseum

Gloucester City Museum is re-opening in summer 2011 after a million pound renovation. Come and experience the brand new interactive displays or sit and have lunch in the new café.

Opening times Tue–Sat all year, 10.00–17.00. Free admission



FOLK MUSEUM 15

103 Westgate Street, Gloucester GL1 2PG
01452 396868

www.gloucester.gov.uk/folkmuseum

Gloucester Folk Museum has a new Tea Shoppe, Vintage Boutique, Retro Room, free exhibitions, events and family craft activities. Come and view the stories in this beautiful Tudor building.

Opening times Tue–Sat all year, 10.00–17.00. Free admission



NATURE IN ART 32

Twigworth, Gloucester GL2 9PA
01452 731422

www.nature-in-art.org.uk

Nature in Art is the world's first museum dedicated exclusively to fine, decorative and applied art inspired by nature.

Opening times Tue–Sun and Bank Holidays, 10.00–17.00. Closed 24, 25, 26 December



SOLDIERS OF GLOUCESTERSHIRE MUSEUM 42

Gloucester Docks, Gloucester GL1 2ED
01452 522682 www.glosterg.org.uk

Visitors can discover what it was like for soldiers throughout the last 300 years. The Gloucestershire Regiment (The Glosters) and The Royal Gloucestershire Hussars have bravely helped shaped British history.

Opening times 10.00–17.00, last entries 16.30



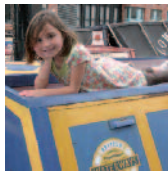
GLOUCESTER WATERWAYS MUSEUM 45

Llanthony Warehouse, Gloucester Docks, Gloucester GL1 2EH
01452 318200

www.gloucesterwaterwaysmuseum.org.uk

Discover the fascinating stories of our waterways and life on a working canal. Boat excursions throughout the year.

Opening times Apr–Oct 10.00–17.00, Nov–Mar 11.00–16.00



WHARF HOUSE RESTAURANT WITH ROOMS 47

Over, Gloucester GL2 8DB

01452 332900 www.thewharfhouse.co.uk

The finest local ingredients combined with flair and imagination in a beautiful setting overlooking the River Severn and alongside the restored Wharf on the Herefordshire and Gloucestershire Canal with all profits donated to the Canal Trust.

Opening times 10.00–21.00 daily



HEDLEY'S TEA AND COFFEE HOUSE 21

66 Westgate Street, Gloucester GL1 2NZ
01452 500090

www.hedleyscatering.co.uk

Traditional afternoon teas, freshly made lunches, soup, baguettes, rolls, ciabattas, sandwiches, toasted panini, jacket potatoes, homemade cakes and sweet treats, coffee and hot chocolate. Near to Cathedral.

Opening times Mon–Sat 07.30–17.00



CAFÉ RENÉ 6

31 Southgate Street, Gloucester GL1 1TP
01452 309340

www.cafereene.co.uk

Come and experience some of Gloucester's historic surroundings. Relax in our friendly atmosphere inside and out, with candlelit dining and new chargrill menu. Café René is the place to be!

Opening times Mon–Thu & Sun 11.00–24.00 and Fri & Sat 11.00–04.00



GLOUCESTER ANTIQUES CENTRE 1

99a High Orchard Street, Gloucester Quays, Gloucester GL1 5SH

01452 529716

www.gacl.co.uk

One of the largest antiques centres in the UK. Over 100 dealers with a huge range of antiques, collectables and gifts. Café offering light lunches.

Opening times Mon–Sat 10.00–17.00 & Sun 11.00–17.00



STANMAN'S KITCHEN 43

42–44 Westgate Street, Gloucester GL1 2NF
01452 412237

www.stanmanskitchen.co.uk

Local delicatessen, grocery and gift store, retailing local produce, cheese, breads and charcuterie. Stanman's Kitchen is a delight for foodies.

Opening times Deli-café open from 09.30–16.30 daily



EASTGATE INDOOR MARKET 14

The Forum, Eastgate Street, Gloucester GL1 1PL

01452 528796

www.gloucester.gov.uk

A diverse range of products and services at affordable prices. Come and have a look, you never know what you'll find!

Opening times Mon–Sat 08.30–17.00



eating out

shopping

attractions

the city of gloucester

MAP 2011



twitter.com/visitgloucester [facebook.com/gloucester](https://www.facebook.com/gloucester)

Published by marketing gloucester ltd

All information was correct at time of going to print, please call Gloucester Tourist Information Centre on 01452 396572 for the most up to date information. Produced by Marketing Gloucester Ltd 01452 207020. Photography by David Sellman and Tony Hickey.

The
Cotswolds

the city of
gloucester
YOUR
CITY

www.thecityofgloucester.co.uk

the city of gloucester

ATTRACTIONS AND SERVICES

- | | |
|---|--|
| 1 Antiques Centre B5 | 25 Kingsholm Rugby Ground E1 |
| 2 Bishop Hooper's Monument C2 | 26 Library D4 |
| 3 Blackfriars Priory C4 | 27 Llanthony Priory A5 |
| 4 Boat Trips (Queen Boadicea II) B5 | 28 Magistrates Court C3 |
| 5 Bus Station E3 | 29 Multiplex Cinema A6 |
| 6 Café René D4 | 30 Museum & Art Gallery D4 |
| 7 Cathedral C2 | 31 Music and Drama Library D4 |
| 8 Citizen's Advice Bureau E4 | 32 Nature in Art E1 |
| 9 City Council Offices B4 | 33 New Inn D3 |
| 10 City East Gate D4 | 34 Oliver Cromwell Paddlewheel C4 |
| 11 County Council Offices (Shire Hall) C3 | 35 Picturedrome Theatre F5 |
| 12 County Court C4 | 36 Police Station C3 |
| 13 Crown Court C3 | 37 Railway Station F3 |
| 14 Eastgate Indoor Market D4 | 38 Register Office C5 |
| 15 Folk Museum C2 | 39 Robert Raikes' House C4 |
| 16 GL1 Leisure Centre E4 | 40 St Michael's Tower D3 |
| 17 Gloucestershire College B5 | 41 St Oswald's Priory C2 |
| 18 Gloucester Guildhall D3 | 42 Soldiers of Gloucestershire Museum C4 |
| 19 Gloucester Archives E2 | 43 Stanman's Kitchen C3 |
| 20 Greyfriars Ruins and Garden D4 | 44 Warehouse Climbing Centre C4 |
| 21 Hedley's Tea and Coffee House C2 | 45 Waterways Museum B5 |
| 22 Hospital (A&E) F3 | 46 Westgate Leisure Area A1 |
| 23 House of the Tailor of Gloucester C3 | 47 Wharf House Restaurant with Rooms A1 |
| 24 King's Theatre E4 | 48 Youth Sports Area and Skate Park D6 |

PARKING

- | | |
|---|--|
| P1 St Oswalds Park & Ride Mon-Sun C1 | P10 Station Road Mon-Sun E4 |
| P2 Peel Shopping Centre Mon-Sun B6 | P11 St Michael's Square Mon-Sun D4 |
| P3 Hare Lane North/South Mon-Sun D2/E2 | P12 Hampden Way Mon-Sun D4 |
| P4 Quay Street Sat only B3 | P13 N. Warehouse, The Docks Sat & Sun B4 |
| P5 The Docks Mon-Sun B5 | P14 Eastgate Rooftop Mon-Sun D4 |
| P6 Bruton Way Multistorey Mon-Sat E3 | P15 Kings Walk Multistorey Mon-Sat D3 |
| P7 Castlemeads Sat-Sun A4 | P16 Southgate St, The Docks Mon-Sun C4 |
| P8 Blackfriars/Ladybellegate Mon-Sat C3 | P17 Westgate St (inc. Coach Park) Mon-Sun B2 |
| P9 Longsmith St Multistorey Mon-Sat C3 | P18 Gloucester Quays Mon-Sun B5 |

GLOUCESTER Tourist Information Centre

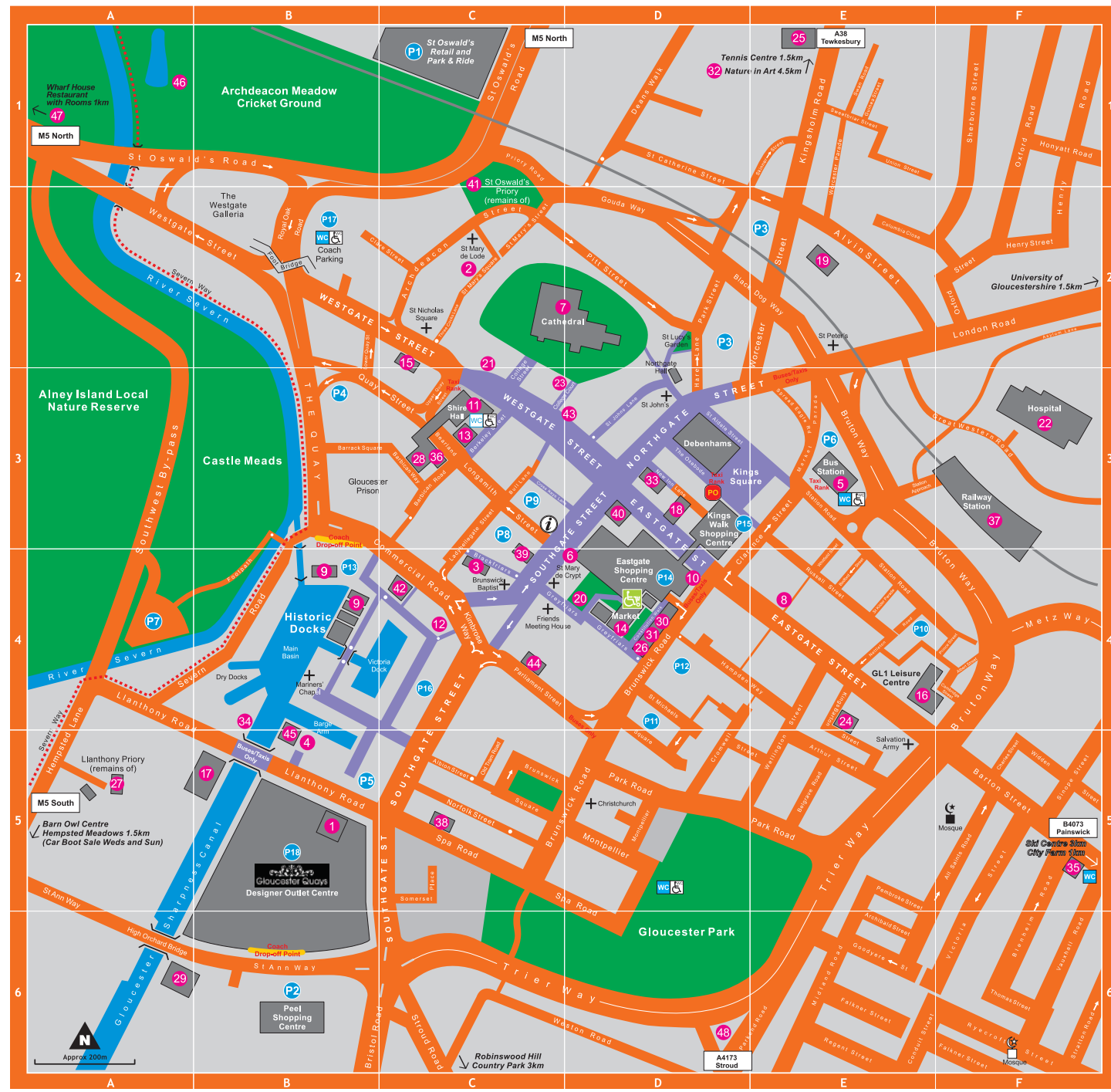
OPENING HOURS:
Mondays 10am-5pm,
Tue-Sat 9.30am-5pm
Please call for Sunday/
Bank Holiday opening hours
28 Southgate Street,
Gloucester GL1 2DP
01452 396572
tourism@
gloucester.gov.uk



Gloucester City Council

Gloucester Shopmobility

01452 302871
GLOUCESTER CITY COUNCIL



- | | | | | | | | |
|---------|----------------------|---------------------|-------------|--------------|-------------------------|---------------------|--------|
| Parking | Coach Drop-off Point | Tourist Information | Post Office | Shopmobility | Public/Disabled Toilets | Pedestrian Priority | Church |
|---------|----------------------|---------------------|-------------|--------------|-------------------------|---------------------|--------|

Based upon the Ordnance Survey mapping with the permission of the Controller of Her Majesty's Stationery Office © Crown copyright. 100019169 2010